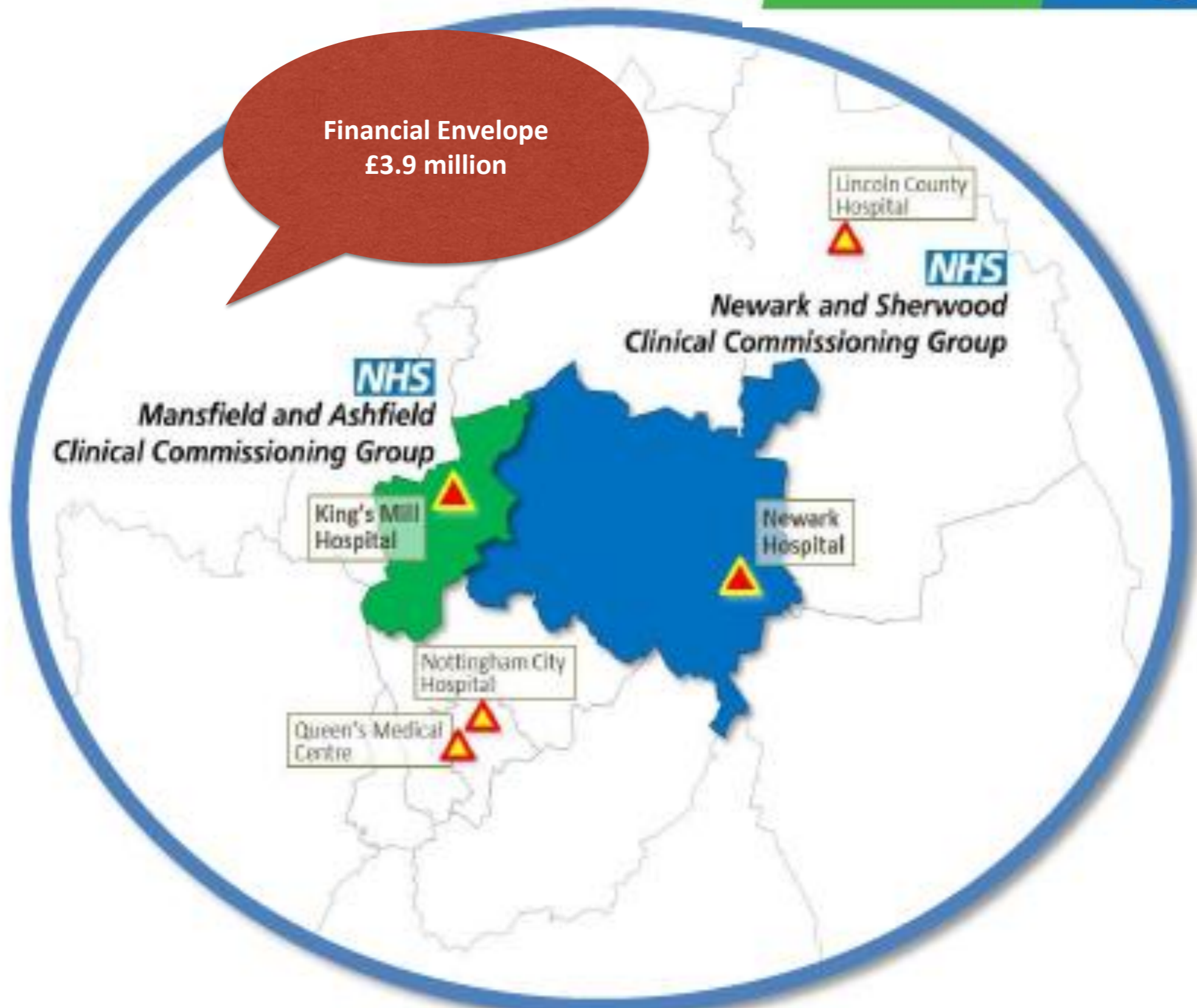


# Nottinghamshire Dr Julie Barker

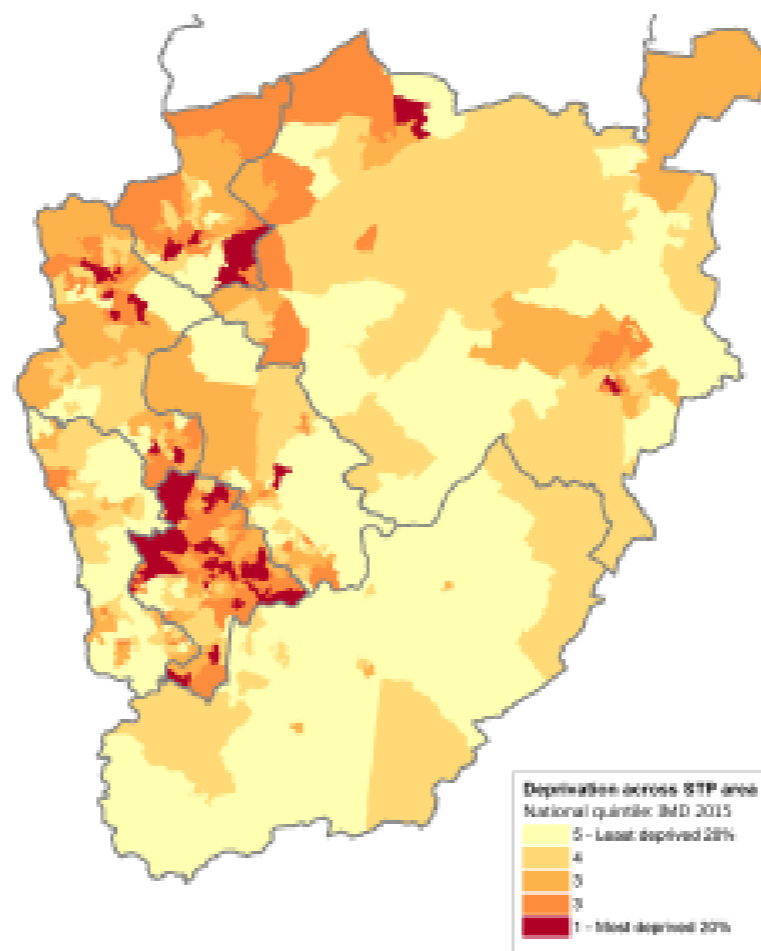
*better+together*



## Nottingham and Nottinghamshire at a glance

### Characteristics

- Local resident population of approx. 1,001,600 people
- Total spend £2.1 billion
- Diverse, growing and ageing population
- Local people want:
  - Support to stay well and independent
  - Quality care, with more services in or close to home
  - Joined-up services, that will be there for future generations



### The System

- 8 Local Authorities
  - Nottinghamshire County and districts
  - Nottingham City (unitary)
- 6 CCGs
  - Nottingham City
  - Nottingham North East
  - Nottingham West
  - Rushcliffe
  - Mansfield and Ashfield
  - Newark and Sherwood
- NHS Providers;
  - Nottinghamshire Healthcare Trust
  - Nottingham University Hospitals
  - Sherwood Forest Hospitals
  - Nottingham CityCare Partnership
  - CircleNottingham
  - Primary Care
  - Out of Hours
  - Ambulance

Patient flows into bordering areas

# the gold standards framework<sup>®</sup>



Ambulance  
EMAS

## Integrated Cross-Boundary Care



Compassionate  
Community  
Churches etc

Hospices  
x2

### HOME GSF Primary Care and Domiciliary Care



### CARE HOME GSF Care Homes



### HOSPITAL GSF Acute Hospitals

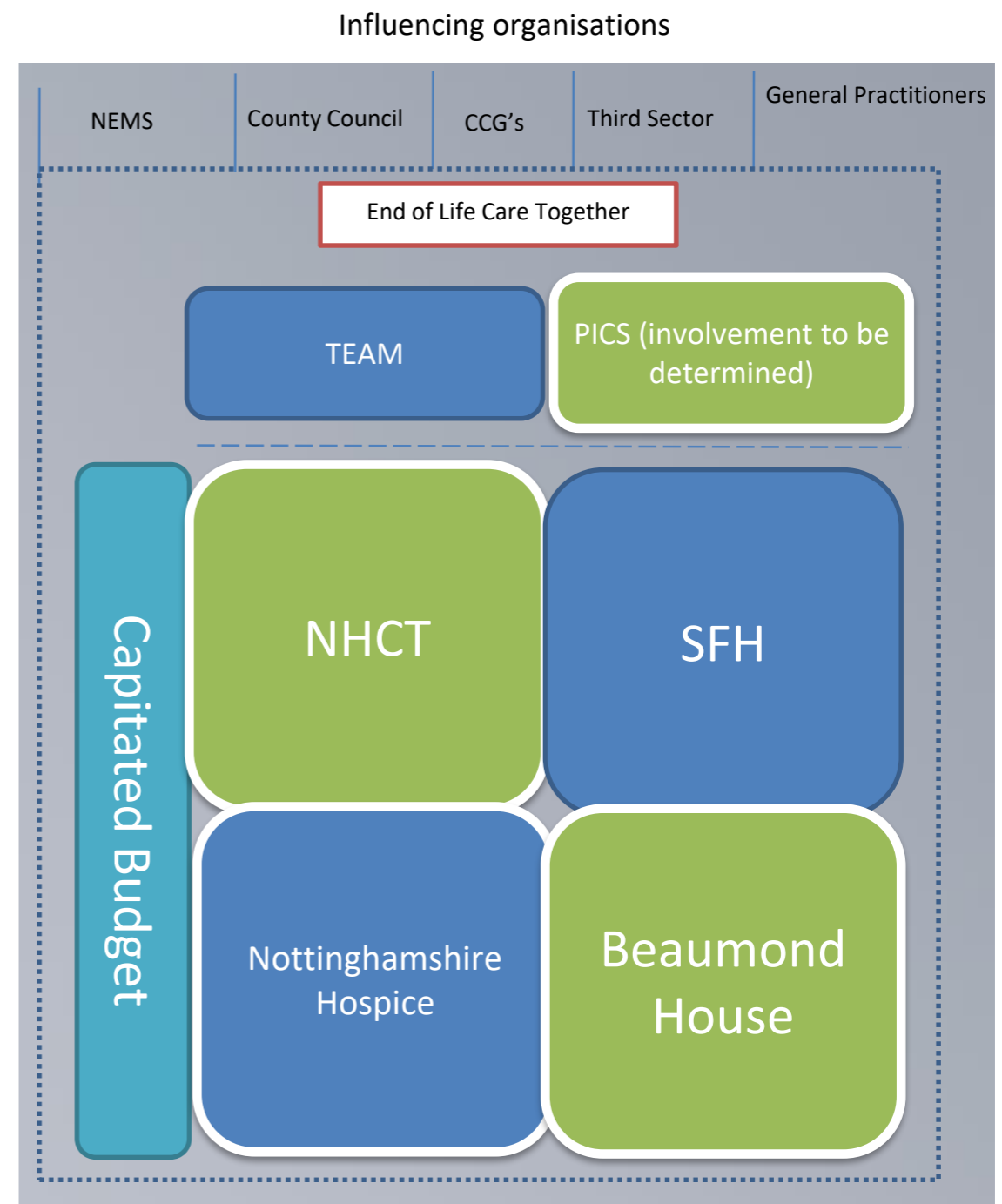


OOH  
NEMS

We are supporters of **Dying Matters**  
Find out more

# Progress so far . . . . .

- 5 key providers round the table developing a model to respond to local strategy
- 24/7 person centred service with care co-ordination & helpline
- Ring fenced EOL budget
- Service delivery board
- Co-responsibility for metrics
- Training & Comms plan
- Go live 1st October 2018



# Key messages

- Takes time - 2 years
- CCG strong leadership
- Shared vision
- Barriers
  1. Ambulance
  2. IT systems
  3. Financial climate
- STP opportunities

KPI
% of deaths in preferred place of care
Number of patients with written advance care plan or evidence that an advance care plan discussion has been offered
Increase number of patients identified on EPaCCS Patient Identification
Reduction of unnecessary ED attendances to hospital for patients at End of Life
Additional PROMS evaluations will be undertaken to improve quality to include: